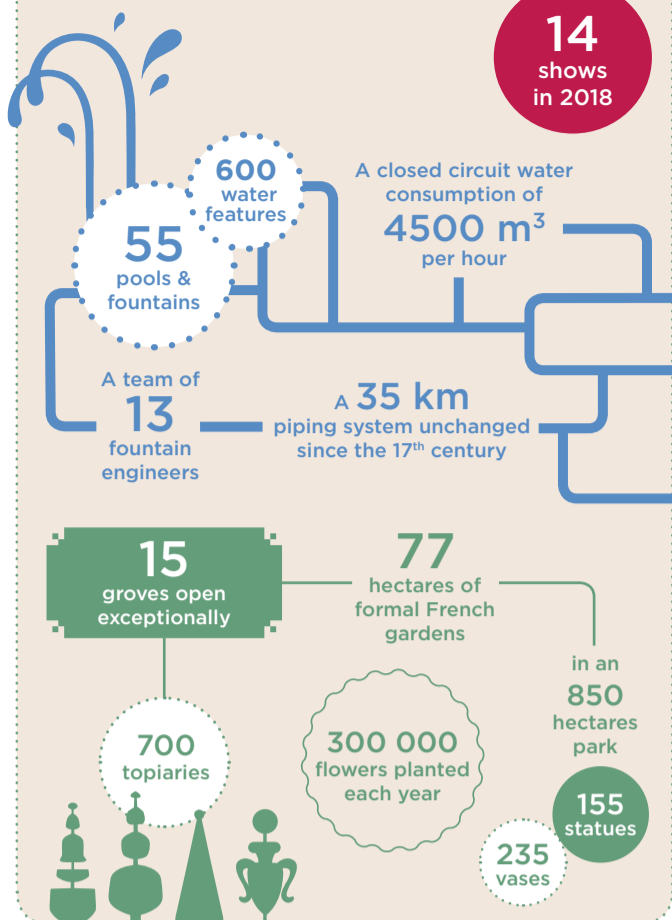


THE NIGHT FOUNTAINS SHOW IN FIGURES

14
shows
in 2018



2018 is the fifth year of Château de Versailles's ambitious illumination project for the Night Fountains Show.

From the Château facade to Apollo's Fountain, Laurent Fachard of Eclairagistes Associés develops multiple ingenious installations in order to confer to statues, pools, fountains and groves the quality of light they deserve. This year a major development will bring light to the Dragon Fountain and Neptune's harbour.

Sponsor of the Night Fountains Show: CITEOS.

Technical partners:

AIR LIQUIDE supplies all fluids for special effects free of charge.

CRYSTAL FOUNTAIN

Partner of the Fountains Shows: COURTOIS AUTOMOBILES.

GROVES & FOUNTAINS

The groves of Versailles were designed during Louis XIV's reign as open air drawing rooms concealed at the heart of the wooded areas of the gardens. One went there for refreshments and light meals, to listen to music or dance. The King could satisfy his taste for gambling and performing arts in these venues intended solely for entertainment and celebrations. Decorated with fountains, vases and statues, accessed through discreet walks, these groves bring surprise and creativity within the Royal Garden.

GREAT PERSPECTIVE

In the Park of the Palace, this grandiose stretch of landscape designed by André Le Nôtre in the 1660s goes from the Palace itself (the King's Bedchamber and the Hall of Mirrors) to the extremity of the Grand Canal. Apollo, the emblematic figure of Louis XIV, is present everywhere in figurative or symbolic form.

- Jean-Baptiste Lully • *Le Triomphe de l'Amour*: Ouverture – *Persée*, *entrée des divinités infernales*: Acte III scène 10 – *Ballets d'Alcidiane*: Ouverture – *Idylle sur la paix*: Air pour Madame la Dauphine
- Marc-Antoine Charpentier • *Offerte à deux chœurs* – *Sanctus pour tous les instruments*
- Jean-Ferry Rebel • *Caprice* – *Tambourins I & II*
- Christoph Willibald Gluck • *Ballo Sinfonia* – *Marche*

GREAT LAWN

The Great Lawn, a vast lawn surrounded by an impressive cortege of marble statues, will be lit up by a series of fireworks installations by Groupe F, with high flames rhythmically punctuating the festive music and offering an astonishing perspective view of the Royal Garden.

LATONA'S FOUNTAIN

From the top of the steps of the Latona's Fountain, the visitor can look out over the Grand Perspective and admire, from the king's viewing point, a constellation of bubbles reflecting the day's last rays of sunshine. The statues of this recently restored fountain illustrate the legend of Diana and Apollo's mother protecting her children against the insults of the peasants of Lycia and demanding vengeance from Jupiter who changed them into frogs.

APOLLO'S FOUNTAIN

The final fireworks display in the fountain of Apollo's Chariot will take place at 10:50pm. Groupe F will be producing a finale visible all along the Grand Perspective, combining a fireworks display at the head of the Grand Canal and flames soaring from the Great Lawn.

- Jean-Baptiste Lully • *Te Deum*: *Symphonie* – *Phaëton*: Ouverture *Ballet de la Nuit*. *Xerxès*: Air pour les esclaves et singes dansants.
- Armide: Prélude – *Le Bourgeois gentilhomme*: Marche pour la Cérémonie des Turcs
- Jean-Philippe Rameau • *Platée*: Act I, scene VI, Orage
- Marc-Antoine Charpentier • *Musique sacrée*: Marche de Triomphe pour les violons, trompettes, timbales, flûtes et hautbois

CHÂTEAU DE VERSAILLES

CHÂTEAU DE VERSAILLES SPECTACLES

Groves exceptionally open, light and musical displays from 8:30pm to 10:45pm
Water displays from 8:35pm to 10:40pm
Final Fireworks from 10:50pm to 11:05pm

Saturdays from 16th June to 15th September

A grand finale with a dazzling fireworks display by Groupe F over the Apollo's Fountain!

An enchanting stroll in the magnificently illuminated gardens of Château de Versailles with the fountains playing to the sound of music.

the Night Fountains Show



MAP 2018

CHÂTEAU DE VERSAILLES

Fountains Shows of Versailles

Musical Fountains Show

Every Saturday and Sunday until 28th October
Every Tuesday until 26th October
Wednesday, 15th August
From 9am to 7pm

Musical Gardens

Every Friday until 26th October
Every Tuesday from 3rd July to 30th October
From 9am to 7pm



Marie-Antoinette

Fireworks show in the Orangery gardens
Groupe F - Christophe Berthonneau, artistic direction
29th June, 5th, 6th, 11th and 12th June at 10pm

Louis XIV's day

Follow Louis XIV during his musical day in the most beautiful sites of Versailles: the Royal Opera and the Royal Chapel, the Hercules Salon, the Hall of Mirrors and Gardens.
8th and 9th July - From 11am to midnight

The Grand Masked Ball of Château de Versailles

Orangery of Château de Versailles
23th June from 11:30pm to dawn

Concerts

Royal Opera, Royal Chapel
Hervé Niquet, Sir John Eliot Gardiner, Mozart - Gilles: *Requiem*, Jean-Christophe Spinosi, Daniel Cuiller

Musical season

Every year, the Royal Opera and the Royal Chapel of Château de Versailles welcome the greatest international artists for an exceptional program of concerts, operas and ballets.

Last trains to Paris

Château de Versailles Rive Gauche station:
11:55pm*
Versailles Rives Droite station:
00:12am*
Versailles Chantiers station:
00:31am*
*Subject to change. Visit www.ratp.fr

inter Le Parisien france-tv

citeos Crystal
AIR LIQUIDE COURTOIS AUTOMOBILES

INFORMATIONS - BOOKING
0033 1 30 83 78 89 • www.chateauversailles-spectacles.fr

@chateauversailles.spectacles @CVSpectacles @chateauversailles

#GRANDESEAUXNOCTURNES

Administrative address:
Château de Versailles Spectacles - Pavillon des Roulettes - Grille du Dragon - 78000 Versailles

SOUTH

ORANGERY PARTERRE

Built by Jules Hardouin-Mansart between 1684 and 1686, it consists of a large central vaulted gallery 150 metres long, prolonged by two side galleries located under the Hundred Steps staircase. During the summer months, the Parterre of the Orangery, forming four stretches of lawn around a circular pond, receives up to 1,055 trees in tubs, that spend the winter inside the building.

Closed the 23rd June for the Grand Masked Ball of Château de Versailles, and the 30th June, 7th and 16th July for the pyrotechnic show *Marie-Antoinette*.

MIRROR FOUNTAIN

Louis XIV ordered this basin in 1702. In the spirit of the fountains of Le Nôtre, but with modern technical means, the Fountains Night Show is presented.

- Jean-Baptiste Lully • *Versailles, l'île enchantée*: Reprise de la marche pour la cérémonie des Turcs (extracts)
Te Deum Charpentier & Lully: *Te Deum laudamus* (extracts)
- Marc-Antoine Charpentier • *Te Deum Charpentier & Lully*: Prélude – *Te aeternum Patrem* – *In Te, Domine speravi* (extracts)

KING'S GARDEN

Visitors strolling through this garden will be guided by strange pyramids of light inspired by oil-papers of the period. They evoke the key professions of the Palace through the symbolism of costumes made after the engravings of Nicolas de Larmessin (1640-1725).

COLONNADE GROVE

In the circular space of the Colonnade Grove designed by Jules Hardouin-Mansart, the sculptor Girardon placed one of the white marble masterpieces of Versailles. Pluto, the God of Hell, snatches Proserpine from the Earth, her mother, and carries her up into the sky, with lasers here creating unexpected shapes in the coloured smoke clouds.

- Jean-Baptiste Lully • *Armide*: *Passacaille*
Les Amants magnifiques: *Entrée d'Apollon*
Le Triomphe de l'Amour: *Entrée d'Apollon* – *Deuxième Air*

GIRANDOLE AND DAUPHIN'S GROVES

In these ravishing grove laid out as labyrinths, discover a highly colourful and theatrical staging of them with water and light features.

BALLROOM GROVE

The Ballroom Grove was built by Le Nôtre and the fountain engineers of Louis XIV. Strollers will be able to enjoy a surprising play of lights accompanying the favourite music of the King and the miracle of the water pouring in cascades down the rocaille steps of the amphitheatre.

- Jacques Cordier • *La Bocanne primitive*. *La Bocanne compliquée*
- Jean-Baptiste Lully • *Phaëton*: *Troupe d'astrée dansante* (Prologue)
Ballet de la nuit: le Roi représentant le Soleil Levant. *Le Bourgeois gentilhomme*: Marche pour la Cérémonie des Turcs – Chaconne des Scaramouches, Frivelins et Arlequins – "Giourdina"
- Michel Corrette • *Les sauvages et la Furstemberg*: *Les Sauvages*, Allegro

NORTH

THREE FOUNTAINS GROVE

Smoke, dry ice, lights and fountains create a magical mystery in one of the favourite groves of Louis XIV (he is said to have designed it), completed by Le Nôtre in 1679. Shells and rocaille features decorate the five levels of fountains from which statues are excluded so that all the visitor's attention is concentrated on the water attractions.

- Jean Féry Rebel • *Les Eléments*: Air pour les violons – Chaconne
- Pierre Montan-Berton l'Ainé • *Nouvelle Chaconne*

NEPTUNE FOUNTAIN

The Neptune fountain was dug out in the shape of a half-circle as in the ancient Greek theatres. Armed with his trident, Neptune, the god of the sea, sends gracious spouts of water into the sky.

NEW IN 2018: Water display of the Neptune Fountain every 15 minutes.

- Christoph Willibald Gluck • *Les Eléments*: Marche
- Jean-Philippe Rameau • *Platée*: Acte I, scène VI, Orage
- Dardanus: Menuet tendre en rondeau, 1^{er} Tambourin, 2^e Tambourin
- Jean-Marie Leclair • *Scylla & Glaucus*: 1^{er} et 2^e Tambourins

WATER THEATER GROVE

This grove was designed by André Le Nôtre between 1671 and 1674; it was restored in 2015 by the landscape gardener Louis Benech for the contemporary garden and the sculptor Jean-Michel Othoniel for the sculpture-fountains. Situated close to the Water Theatre Grove, the Golden Children Fountain was created in 1709 by Jules Hardouin-Mansart. After major restoration works it has reopened in 2017.

APOLLO'S BATH GROVE

The pre-Romantic aura of the grove of Apollo's Bath, laid out in 1776 by Hubert Robert, corresponds to the fashion for English-style gardens with its astonishing grotto which shelters the three splendid marble sculpture groups of Apollo and the Muses (survivors from the Thetys Grotto built by Louis XIV), carved by Marsy, Guérin, Girardon and Regnaudin.

ENCELADUS GROVE

The grove completed by Le Nôtre in 1675 contains one of the marvels of French Baroque sculpture, a gilt lead masterpiece by Marsy depicting the giant Enceladus buried under the rocks thrown on him by the gods of Olympus that he had dared to insult. The theatre wind machine, smoke machine and thunder-maker were the favourite special effects of Lyrical Tragedy during the 17th century.

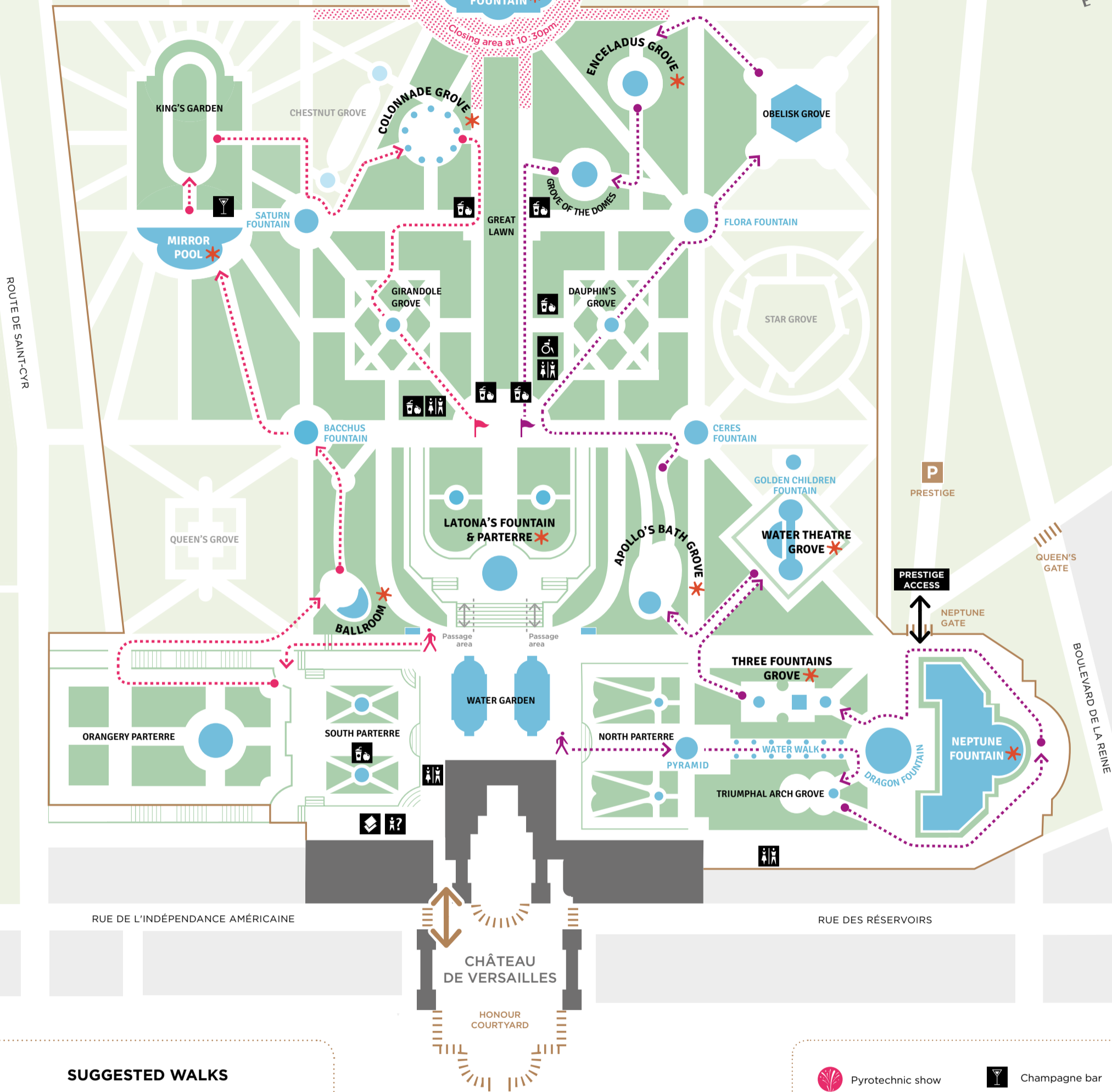
- Jean-Baptiste Lully • *Armide*: Prélude (Act II, scene 5)
- Jean-Ferry Rebel • *Les Eléments*: Le Chaos



DOWNLOAD FOR FREE
"THE GARDENS OF VERSAILLES"
APPLICATION!
For more information about groves,
pools and fountains.



100 M



SUGGESTED WALKS

To facilitate your stroll, we suggest two circuits that will allow you to discover the gardens easily. You can also organise your stroll to suit yourself.



SOUTH
Suggested walk
South side
Estimated time: 1h



NORTH
Suggested walk
North side
Estimated time: 1h30



After your stroll, return to the Grand Perspective and watch the fireworks display over the Apollo's Chariot fountain from 10:50pm to 11:05pm.

*** GROVES & FOUNTAINS NOT TO BE MISSED!**

TONIGHT IN THE GARDENS

GROVES EXCEPTIONALLY OPEN AND LIGHTS DISPLAY
from 8:30pm to 10:45pm

WATER DISPLAYS
from 8:35pm to 10:40pm

Every 10 minutes
Mirror Pool

New Neptune Fountain
Every 15 minutes from 8:45pm to 10:30pm

FINAL FIREWORKS
from 10:50pm to 11:05pm



Pyrotechnic show



Champagne bar



Stairs



Snacks



Fountains Night Show ticket office



Free toilets



Entrance / Exit



Lost child



Facilities for visitors with reduced mobility

NOTICE TO VISITORS

No readmission after leaving the site.

No picnics are allowed inside the paying area. It is forbidden to walk or sit on lawns or to lean on or touch statues.

The fountains' water is non-drinkable. Bathing is prohibited.

Please observe instructions given by hospitality staff.